



▲ Indoor heated swimming pool in Wellness Center



▲ Indoor rock climbing walls in Wellness Center

## Beautiful Home Improving Life Function

The STSP's quality of life must be improved with the increase of enterprises and influx of employees. The construction of additional living, dining, and recreational community facilities add functionality and excellence to the living environment.

### Provide Excellent Services Four Exceptional Business Districts

Various businesses have been introduced in TSP to provide Park staff with basic living necessities. In pursuit of better quality of services, four business districts will be responsible to satisfy Park staff with convenience and comfort in life.

**Park 17 Life Style Center:** It is located in the standard factory area and operated by 7-ELEVEN to serve the business consumer market.

**Commercial Center:** The Premier Restaurant on the first floor is available for banquet service.

**Wellness Center:** It is located at the northeast corner of the Park and operated by Leader Co. to fulfill the Park staffs' fitness and recreation needs.

**Life Hub:** It is located in the dormitory zone of the Park and operated by Haw-Yuen Management to create a family-friendly atmosphere for the Park residents.

For the satisfaction of the Park staff, the STSP Administration works with industrial/commercial business service providers to promote marketing projects, innovative operation, and continued development of the shopping districts to attract shoppers, such as joint promotion events by the STSP Administration and providers at the Park enterprises location, advertisements via the STSP web site, signs at the Park intersections, and flyers on bulletins, quality improvement by the providers, theme promotional plans, and etc.

### Wellness Center Superb Destination for Fitness and Recreation

There are three halls in the Wellness Center. Hall A is the multi-purpose indoor stadium with 4-meter rock-climbing walls, and 6 ping-pong tables, as well as badminton, basketball, and volleyball courts. Hall B features a heated indoor SPA pool and has a multi-purpose conference room on its third floor. The first and second floors of Hall C locate the food court. On its third and fourth floors are a gym, spin room, aerobic classroom, and saunas. The Wellness Center is the premiere designated area of fitness in TSP and it has been servicing staff since May 1, 2008.

The Center is the first OT (operate and transfer) project in Science Parks involving



▲ Park 17 Life Style Center attracts customers with its excellent service.



▲ With a taste of Mediterranean, Yingsi Lakeside Waterfront Café

a private sector. It is planned and operated by Leader Hotel Business Group and popular with the Park staff.

**Yingsi Lakeside Waterfront Café in TSP  
The Best LOHAS Space**

Studies show those who have good work/life balance will work most efficiently. Yingsi Lakeside Waterfront Café, an outsourcing business in TSP, had its grand opening on July 1, 2008. The café provides fishing and other outdoor sporting gear for sale or rental as well as light refreshments. Design of the Café was modeled after Mediterranean architectural style. Main themes of clean, bright, and relax are to create the best attraction within the TSP.

to the public in May 2008. The park is designed with a “classical South Min (Fujian) garden” theme and portrays the ideal lake view of Tainan Min-style garden. The recreational park, brimming with local culture, wins the attention of many visitors.



▲ The Phase III single dormitory in TSP is an excellent place to live.

The “Singangshe Culture Center” in the southeast quadrant of the park features a Culture Hall on its first floor and Sin Gang Temple, the ritual site for 13 temples that were relocated to TSP, on the second floor. Many attended the exhibition as 15 contemporary artists showcased their work at the grand opening ceremony on May 18, 2008. The Culture Hall has become an important location for the interaction of technology and culture in TSP.

**Phase III Singles Dormitory in TSP  
Excellent Accommodation**

The newly constructed Phase III singles dormitory directly across street from the Life Hub accommodates TSP staff. The 848 units include singles, doubles, and family suites throughout two 7-story buildings and two 4-story buildings. As of April 22, 2008, two stories of complimentary underground parking were made available to residents.

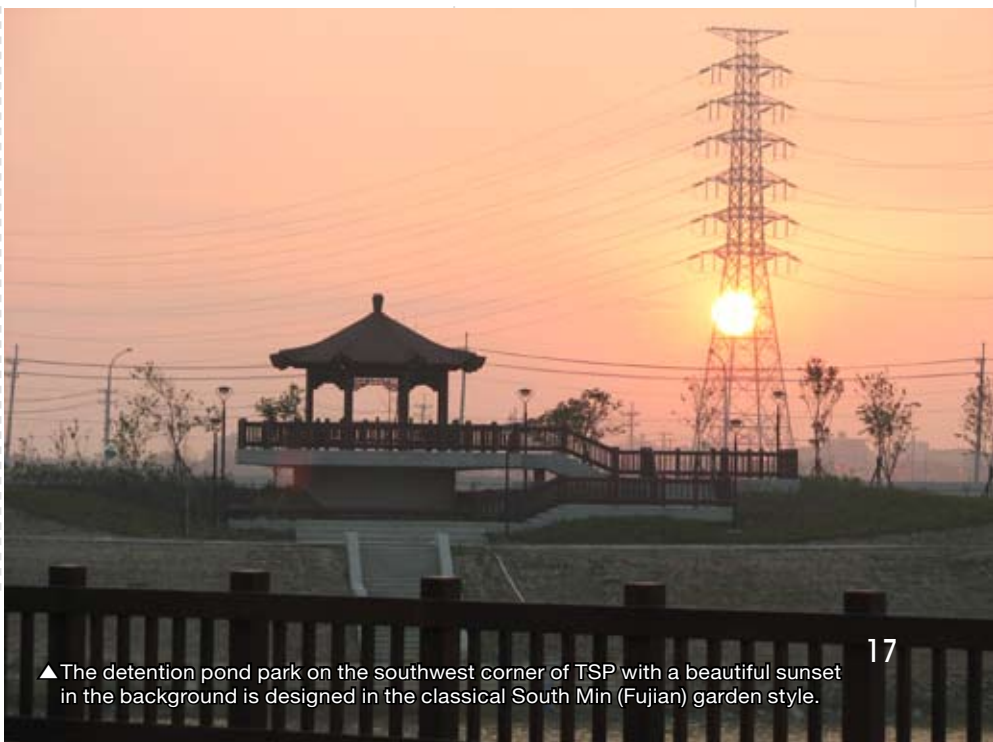
The Phase III singles dormitory is designed with marvelous landscape featuring sculpture and nature. The nearby Life Hub periodically hosts guest seminars. The fine cultural environment has made the area an excellent place to live.

**Luke Light Café in KSP  
Convenient, Healthy,  
and Affordable Cuisine**

The first café in KSP, Luke Light Café, has opened in the standard factory of KSP on March 4, 2008 and provided delicious food and drink to the Park staff since.

**Cultural Detention Pond Park  
on the Southwest of TSP**

The 7-hectare detention pond park on the southwest quadrant of TSP opened



▲ The detention pond park on the southwest corner of TSP with a beautiful sunset in the background is designed in the classical South Min (Fujian) garden style.